

VARIOCAST SEEDER



“ THE ALL-ROUND VERSATILE ”
seeding applicator

VARIOCAST SEEDER

OPICO's Variocast lets you band or broadcast sow behind the cultivation element of your subsoiler or discs.

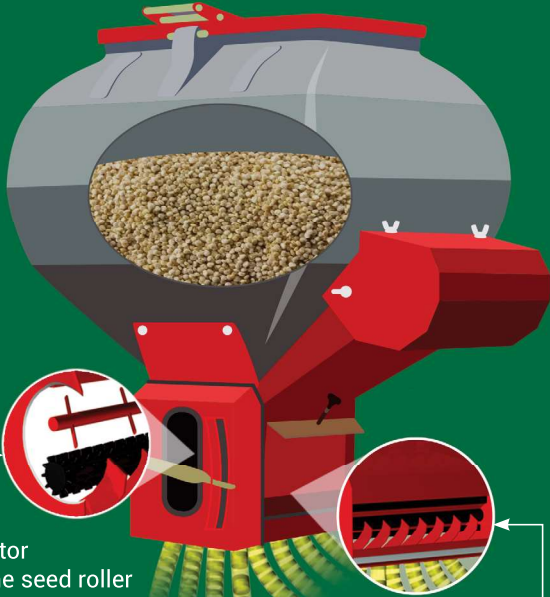
✓ PNEUMATIC SEED DELIVERY

A hydraulic fan or two 12v electric fans provide the airflow to deliver the seed down the pipe to the correct position on the machine to blow seed to the outlet.

HOW IT WORKS

Variocast seeders provide the next best thing to precision seeding by using individual metering rollers to feed each seed outlet.

The 180 and 400 litre Variocast hoppers have steep sides to ensure seed flows and a removable baffle plate to make sure there is always a consistent seed weight on top of the seed roller.



An agitator above the seed roller ensures even the most bulky seed flows evenly.

The metering roller is divided into 8 or 16 sections which individually meter seed down each pipe.

The original outlets are designed for overlapping full width spread but these can be altered to band the seed in 150mm to 250mm rows when working on a subsoiler seeding behind the leg.



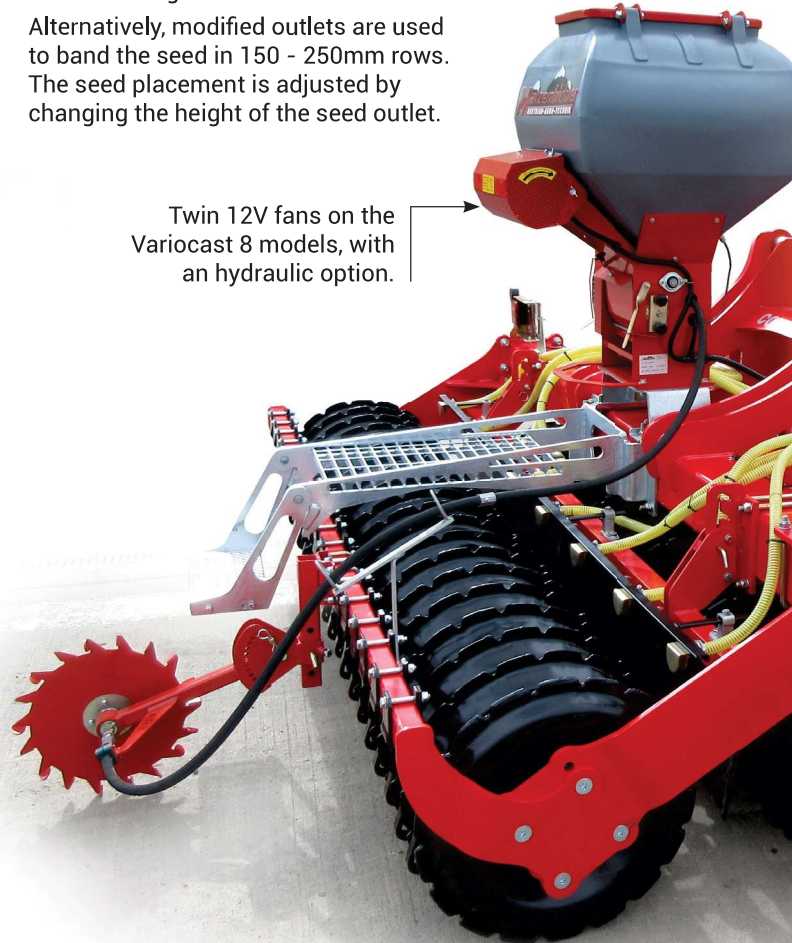
Rape plant root structure on heavy land behind min-till establishment (left) and behind a subsoiler leg (right)

✓ EVEN SEED DISTRIBUTION

Variocasts can be used to spread seed evenly across the machine width or to band sow. The standard broadcasting outlets spread the seed in an overlapping pattern for an even full width coverage.

Alternatively, modified outlets are used to band the seed in 150 - 250mm rows. The seed placement is adjusted by changing the height of the seed outlet.

Twin 12V fans on the Variocast 8 models, with an hydraulic option.



✓ ACCURATE SEEDRATE CONTROL

The amount of seed applied is controlled by the speed of the metering roller, this is adjusted until the desired seed rate is achieved.



Mechanical Versions

A step-less gear box and lever are used to adjust the seed rate.



Calibration

On both types of Variocast this is performed by removing the metering roller cover and using the calibration tray.



Electronic Versions

The control box in the cab allows setting and adjustment on the move.

✓ FORWARD SPEED RELATED METERING

Mechanical drive seeders have a spoked land wheel drive to give constant forward speed related seed metering. While the electronic controlled seeder has a radar as standard.

On some tractors it is possible to connect the electronic seeder to the tractors radar system. Forward speed related metering allows accurately maintained seed rates on high draft machines and in awkward shaped fields where ground speeds may vary.



Variocast 8
Electric fan
mechanically metered
on HE-VA Combi-Disc

✓ PRECISE SEED METERING

Unlike most other types of seeders, the Variocast uses individual metering wheels for each seed outlet enabling extremely accurate seed metering and guaranteeing the same amount of seed is fed to each outlet. This is crucially important when using low seed rates and small seeds for example with hybrid Oil Seed Rape down to under 2kg/ha.

Four types of metering rollers are available for the Variocast.



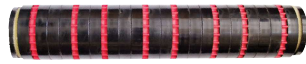
STANDARD ROLLER



FINE ROLLER



DIMPLE ROLLER



MICRO ROLLER

Any two of these rollers are supplied as standard with the Variocast, the third or fourth can be purchased as an extra.

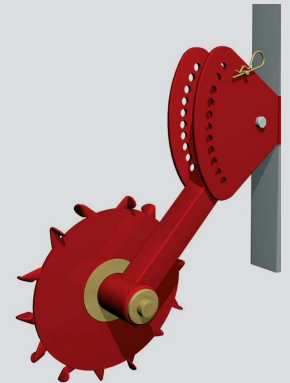
There are 8 seed outlets as standard but it is possible to blank off a number of them using the blanking roller and stop kit, for example for band sowing behind a 5 leg subsoiler with one outlet behind each leg.

FIT FOR THE JOB (Easy to fit)

✓ LAND DRIVE WHEEL / RADAR

Variocasts are capable of metering seed to within 0.1kg/ha if required. Forward speed related metering, whether by land wheel or radar, ensures accuracy.

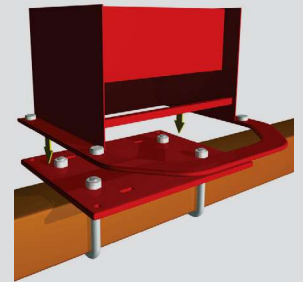
When choosing spoken land wheel drive it gives constant forward related metering. Where as the electronic machine uses radar, on some tractors it is possible to connect to the tractors own radar system.



✓ HOPPER POSITIONING

The Variocast hopper can be mounted anywhere but it is important to ensure that the seed pipes are not too long and seed always flows downhill.

Practicalities of calibration and filling the seed hopper should always be considered when mounting the hopper.



A simple base plate is provided to bolt or weld onto the implement, the Variocast can then be mounted onto this and removed if necessary.

✓ OUTLETS

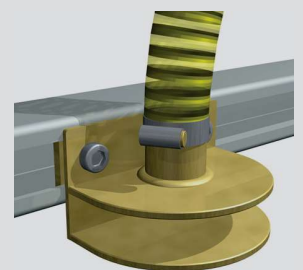
Positioning the outlets correctly is critical for good seed placement and even seed germination.

With most applications the seed outlets should be mounted just behind the final cultivation tool and in front of the press roller.

Where possible some adjustment should be designed into the mounting of the outlets to

allow fine tuning of the seed placement in the field.

The optional 1.5m or 2m distributor holders assist mounting the outlets and allow horizontal and vertical adjustment to alter the spread pattern.





VARIOCAST SEEDER SPECIFICATIONS

Model	Working Width	Seedbox Volume	Fan Type	Seed Outlets	Control	Weight
VARIOCAST 8						
Variocast 8	Up to 6.5m	180ltrs	2 x Electric 12v Fans	8	Mechanical	66kg
Variocast 8 E	Up to 6.5m	180ltrs	2 x Electric 12v Fans	8	Electronic	66kg
Variocast 8 E Pro	Up to 6.5m*	180ltrs	1 x Hydraulic Fan - 20L/min	8	Electronic	90kg

Variocast 8 maximum seed rate per hectare and working width dependent on forward speed:

- 40kg when fitted to 6m working width
- 80kg when fitted to 3m working width

VARIOCAST 16						
Variocast 16 E Pro	Up to 12.5m	400ltrs	1 x Hydraulic Fan - 20L/min	16	Electronic	130kg

Variocast 16 maximum seed rate per hectare and working width dependent on forward speed:

- 40kg when fitted to 12m working width
- 80kg when fitted to 6m working width
- 160kg when fitted to 3m working width

*For full width spreading above 6.5m additional Y-pieces and outlets are required (max rec. 9.5m)
N.B. Hydraulic fan requires 0 - 20 litres per minute max oil supply and free flow return



OPICO have been bringing grassland Harrows, Interrow cultivators and Seeders, manufactured by Hatzenbichler in Austria, to farmers and contractors in the UK for over 25 years.



Profit from our knowledge

OPICO Ltd

Cherry Holt Road, Bourne,
Lincolnshire PE10 9LA.

01778 421111
ask@opico.co.uk
www.opico.co.uk
@opicoag

